

SEND/EYFS TEACHER

MPS/UPS + SEN Allowance

Cedars is delighted to be recruiting a **SEND Early Years teacher** to join our team in September 2026.

This is a unique opportunity to become part of a talented, compassionate, and ambitious team at Cedars, a specialist setting for children and young people with a wide range of complex needs. We are proud to provide an inspiring curriculum supported by exceptional therapeutic facilities and a nurturing ethos.

"The staff go above and beyond. Amazing people and school."

Parent



WHY CEDARS?

Wide Range of Therapeutic Approaches

- Soft Play Facility
- Sensory Integration Room
- Immersion Room
- Bounce Therapy Space
- Hydrotherapy Pool
- Sensory Rooms
- Exciting outdoor play areas
- Forest School
- Tree Tops Occupational Therapy
- Kalmer Counselling
- Speech and Language Support
- Plus, Poppy, our much-loved Dog Mentor

“Everyone is so lovely to work with. The facilities are a great asset.”

Staff Survey

“Staff create environments where students feel happy and safe.”

Staff Survey



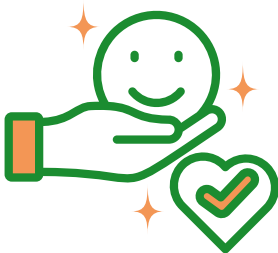
COMMITMENT TO DEVELOPMENT

We invest in our people through:

- Access to high-quality CPD
- Training in sensory and therapeutic approaches
- Opportunities for partnership and innovation
- A culture that encourages reflection, teamwork, and creative teaching
- Help to balance work and home commitments with a family friendly approach.

“We have great facilities, good staff and supportive leadership”

Staff survey, Feb 2025



“Cedars promotes a culture that is supportive towards mental health”

Staff survey, Feb 2025



FIND OUT MORE

If you have the energy, empathy, and creativity to make a real difference, we'd love to hear from you.

For more information or to arrange a visit, please see our website:

[Cedars Trust Vacancies](#)

Applications to be received by Friday 24th April at 12 noon.

Interviews will take place on Wednesday 6th May 2026.

“Pupils thrive at Cedars Academy. Staff have extremely detailed knowledge of each pupil and students and have developed strong, caring relationships with them all”

Ofsted, Jan 2023

